

# Cable Ties & Accessories

## Cable Ties-Nylon

JT&T's Nylon Cable Ties are self-locking & made of industry standard 6/6 nylon; they are injection molded to give you consistent performance & exact fit. Black cable ties are UV rated for longer lasting outdoor use. Ongoing quality control measures assure products can be counted on under demanding conditions.

Nylon cable ties have superior tensile strength; achieved from one piece construction. They are more resistant to fading, cracking & meet lower insertion force requirements. Angled tail provides quicker initial insertion alignment & tail finger grips allow for easier handling & tightening. Some applications include – securing & bundling hoses, wire, cable & tubing. Color-coding for wire identification & packaging. Our processes & manufacturing practices have passed ISO 9002, CSA, Military & Society of Automotive Engineers (SAE) Specifications. UL listed & meets flammability rating UL94V-2. Meets stringent CSA & ISO 9002 international standards & also meets requirements of SAE-AMS-DTL-23190 (formerly MIL-S-23190). Temperature rating from -40°C (-40°F) to 85°C (185°F).

Other names for 'Cable Ties' include, but are not limited to the following:

- Wire Ties
- Zip Ties
- Quick Ties
- Wire Wraps
- Tie Wraps



Ordering Size (Nominal)	Pcs	Width (+/- 0.02")	Tensile Strength	Natural Part#	UV Black Part#	Red Part#	Purple Part#	Green Part#	Blue Part#	Yellow Part#	Gray Part#	Neon OR Part#	Neon GN Part#	Neon Ylw Part#	Neon Pink Part#
4"	31	0.10"	18 Lbs.	4701H	4702H	4701-2H	4701-4H	4701-5H	4701-6H	4701-7H	4701-8H	4701N3H	4701N5H	4701N7H	4701N8H
4"	100	0.10"	18 Lbs.	4701C	4702C	4701-2C	4701-4C	4701-5C	4701-6C	4701-7C	4701-8C	4701N3C	4701N5C	4701N7C	4701N8C
4"	500	0.10"	18 Lbs.	4701D	4702D	4701-2D	4701-4D	4701-5D	4701-6D	4701-7D	4701-8D	4701N3D	4701N5D	4701N7D	4701N8D
4"	1,000	0.10"	18 Lbs.	4701M	4702M	4701-2M	4701-4M	4701-5M	4701-6M	4701-7M	4701-8M	4701N3M	4701N5M	4701N7M	4701N8M
5.5"	25	0.14"	40 Lbs.	4703H	4704H	4703-2H	—	4703-5H	4703-6H	4703-7H	4703-8H	4703N3H	4703N5H	4703N7H	4703N8H
5.5"	100	0.14"	40 Lbs.	4703C	4704C	4703-2C	—	4703-5C	4703-6C	4703-7C	4703-8C	4703N3C	4703N5C	4703N7C	4703N8C
5.5"	500	0.14"	40 Lbs.	4703D	4704D	4703-2D	—	4703-5D	4703-6D	4703-7D	4703-8D	4703N3D	4703N5D	4703N7D	4703N8D
5.5"	1,000	0.14"	40 Lbs.	4703M	4704M	4703-2M	—	4703-5M	4703-6M	4703-7M	4703-8M	4703N3M	4703N5M	4703N7M	4703N8M
7.5"	14	0.18"	50 Lbs.	4705H	4706H	4705-2H	4705-4H	4705-5H	4705-6H	4705-7H	4705-8H	4705N3H	4705N5H	4705N7H	4705N8H
7.5"	100	0.18"	50 Lbs.	4705C	4706C	4705-2C	4705-4C	4705-5C	4705-6C	4705-7C	4705-8C	4705N3C	4705N5C	4705N7C	4705N8C
7.5"	500	0.18"	50 Lbs.	4705D	4706D	4705-2D	4705-4D	4705-5D	4705-6D	4705-7D	4705-8D	4705N3D	4705N5D	4705N7D	4705N8D
7.5"	1,000	0.18"	50 Lbs.	4705M	4706M	4705-2M	4705-4M	4705-5M	4705-6M	4705-7M	4705-8M	4705N3M	4705N5M	4705N7M	4705N8M
8"	100	0.10"	18 Lbs.	4741C	4740C	4741-2C	4741-7C	4741-5C	4741-6C	4741-4C	4741-8C	—	—	—	—
8"	500	0.10"	18 Lbs.	4741D	4740D	4741-2D	4741-7D	4741-5D	4741-6D	4741-4D	4741-8D	—	—	—	—
8"	1,000	0.10"	18 Lbs.	4741M	4740M	4741-2M	4741-7M	4741-5M	4741-6M	4741-4M	4741-8M	—	—	—	—
11.5"	14	0.10"	50 Lbs.	4707H	4708H	4707-2H	4707-4H	4707-5H	4707-6H	4707-7H	4707-8H	4707N3H	4707N5H	4707N7H	4707N8H
11.5"	100	0.18"	50 Lbs.	4707C	4708C	4707-2C	4707-4C	4707-5C	4707-6C	4707-7C	4707-8C	4707N3C	4707N5C	4707N7C	4707N8C
11.5"	500	0.18"	50 Lbs.	4707D	4708D	4707-2D	4707-4D	4707-5D	4707-6D	4707-7D	4707-8D	4707N3D	4707N5D	4707N7D	4707N8D
11.5"	1,000	0.18"	50 Lbs.	4707M	4708M	4707-2M	4707-4M	4707-5M	4707-6M	4707-7M	4707-8M	4707N3M	4707N5M	4707N7M	4707N8M
14.5"	9	0.18"	50 Lbs.	4709H	4710H	4709-2H	4709-4H	4709-5H	4709-6H	4709-7H	4709-8H	—	—	—	4709N8H
14.5"	100	0.18"	50 Lbs.	4709C	4710C	4709-2C	4709-4C	4709-5C	4709-6C	4709-7C	4709-8C	—	—	—	4709N8C
14.5"	500	0.18"	50 Lbs.	4709D	4710D	4709-2D	4709-4D	4709-5D	4709-6D	4709-7D	4709-8D	—	—	—	4709N8D
14.5"	1,000	0.18"	50 Lbs.	4709M	4710M	4709-2M	4709-4M	4709-5M	4709-6M	4709-7M	4709-8M	—	—	—	4709N8M

## Screw-Mount Cable Ties - Nylon



JT&T's Screw Mount Nylon Cable Ties are self-locking & have a mounting tab with a molded-in screw hole for securing bundles of wire on virtually any surface that has or can accept a drilled hole. Up to a 1/4" screw, bolt or rivet can be used to attach a bundle to another surface. The design allows for bundling before or after screwing clamp in place. Made of industry standard 6/6 nylon; they are injection molded to give you consistent performance & exact fit. Black cable ties are UV rated for longer lasting outdoor use. Ongoing quality control measures assure products can be counted on under demanding conditions. Nylon cable ties have superior tensile strength; achieved from one piece construction. Angled tail provides quicker initial insertion alignment & tail finger grips allow for easier handling & tightening. UL listed & meets flammability rating UL94V-2. Meets stringent CSA & ISO 9002 international standards & also meets requirements of SAE-AMS-DTL-23190 (formerly MIL-S-23190). Temperature rating from -40°C (-40°F) to 85°C (185°F).

• Also called: Mounting Tab Cable Ties

Ordering Size (Nominal)	Pcs	Width (+/- 0.02")	Tensile Strength	Natural Part#	UV Black Part#
7.5"	11	0.18"	50 Lbs.	—	4725H
7.5"	13	0.18"	50 Lbs.	4724H	—
7.5"	25	0.18"	50 Lbs.	4724F	4725F
7.5"	50	0.18"	50 Lbs.	4724L	4725L
7.5"	100	0.18"	50 Lbs.	4724C	4725C
7.5"	500	0.18"	50 Lbs.	4724D	4725D
7.5"	1,000	0.18"	50 Lbs.	4724M	4725M
12.5"	6	0.18"	50 Lbs.	4726H	4727H
12.5"	50	0.18"	50 Lbs.	4726F	4727F
12.5"	100	0.18"	50 Lbs.	4726C	4727C
12.5"	500	0.18"	50 Lbs.	4726D	4727D
12.5"	1,000	0.18"	50 Lbs.	4726M	4727M
14.5"	6	0.18"	50 Lbs.	4728H	—
14.5"	50	0.18"	50 Lbs.	4728F	—
14.5"	100	0.18"	50 Lbs.	4728C	—
14.5"	500	0.18"	50 Lbs.	4728D	—
14.5"	1,000	0.18"	50 Lbs.	4728M	—
14.5"	3	0.18"	120 Lbs.	4730H	—
14.5"	50	0.18"	120 Lbs.	4730L	—
14.5"	100	0.18"	120 Lbs.	4730C	—
14.5"	500	0.18"	120 Lbs.	4730D	—
14.5"	1,000	0.18"	120 Lbs.	4730M	—

## Heavy-Duty Cable Ties - Nylon



JT&T's Heavy-Duty Nylon Cable Ties are self-locking & have a high tensile strength; between 120Lbs. to 175Lbs. depending on size. The superior tensile strength & long lengths are ideal for using on larger bundles & in applications where heavy strength & durability is a must. Made of industry standard 6/6 nylon; they are injection molded to give you consistent performance & exact fit. Black cable ties are UV rated for longer lasting outdoor use. Ongoing quality control measures assure products can be counted on under demanding conditions. Nylon cable ties have superior tensile strength; achieved from one piece construction. UL listed & meets flammability rating UL94V-2. Meets stringent CSA & ISO 9002 international standards & also meets requirements of SAE-AMS-DTL-23190 (formerly MIL-S-23190). Temperature rating from -40°C (-40°F) to 85°C (185°F).

Ordering Size (Nominal)	Pcs	Width (+/- 0.02")	Tensile Strength	Natural Part#	UV Black Part#
7.5"	10	0.30"	120 Lbs.	4721F	4723F
7.5"	50	0.30"	120 Lbs.	4721L	4723L
7.5"	100	0.30"	120 Lbs.	4721C	4723C
14.5"	5	0.30"	120 Lbs.	4711H	4712H
14.5"	50	0.30"	120 Lbs.	4711L	4712L
14.5"	100	0.30"	120 Lbs.	4711C	4712C
17"	5	0.34"	175 Lbs.	4731F	4736F
17"	50	0.34"	175 Lbs.	4731L	4736L
17"	100	0.34"	175 Lbs.	4731C	4736C
24"	4	0.34"	175 Lbs.	4714F	4713F
24"	50	0.34"	175 Lbs.	4714L	4713L
24"	100	0.34"	175 Lbs.	4714C	4713C
36"	4	0.34"	175 Lbs.	4716F	4718F
36"	50	0.34"	175 Lbs.	4716L	4718L
36"	100	0.34"	175 Lbs.	4716C	4718C
40"	4	0.34"	175 Lbs.	4738F	4739F
40"	50	0.34"	175 Lbs.	4738L	4739L
40"	100	0.34"	175 Lbs.	4738C	4739C
48"	4	0.35"	175 Lbs.	4743F	4744F
48"	50	0.35"	175 Lbs.	4743L	4744L
48"	100	0.35"	175 Lbs.	4743C	4744C

# Cable Ties & Accessories

## Steel Frame Clips

JT&T's Spring Steel Push-On Frame/Body Clips are ideal for securing wiring inside automobile chassis. Frame clips are made from heat-treated spring steel & feature a black corrosion resistant finish. Holds wires to structures such as truck or trailer frames with a snap mount. Simply snap in place to secure.



Part#	Size	Length	Width	Height (Base)	Height (Tongue)	Pcs
519H	Small	1-1/8"	1/2"	1/4"	3/8"	7
519F	Small	1-1/8"	1/2"	1/4"	3/8"	25
519C	Small	1-1/8"	1/2"	1/4"	3/8"	100
520H	Medium	1-3/4"	1/2"	1/4"	1/2"	6
520F	Medium	1-3/4"	1/2"	1/4"	1/2"	25
520C	Medium	1-3/4"	1/2"	1/4"	1/2"	100
521H	Large	1-1/2"	1/2"	1/2"	5/8"	5
521F	Large	1-1/2"	1/2"	1/2"	5/8"	25
521C	Large	1-1/2"	1/2"	1/2"	5/8"	100

## Clamps - Santoprene Insulated

JT&T's Santoprene Insulated Clamps are made with cold-rolled steel and have a removable santoprene cushion; which helps cut vibration while protecting the loom or cables. Stainless steel loom clamps all have a 1/4" mounting hole. Santoprene is a superior material in areas of friction, grip effort, surface texture & finger/hand comfort in comparison with grips made of steel or nylon. Typical applications include holding hydraulic hoses, wire harnesses & cables. Other attributes include soft-touch, durability, resistance to heat, chemicals & various fluids. Santoprene is an excellent insulator for electrical installation and provides a consistent thickness throughout. Temperature rating from -40°C (-40°F) to 135°C (275°F).



Part #	Ordering Size (Open I.D.)	Inner Diameter		Width	Mounting Hole	SAE Size	Pcs
		Closed	Open				
4464F	1/4"	3/16"	1/4"	5/8"	1/4"	004	10
4464	1/4"	3/16"	1/4"	5/8"	1/4"	004	25
4466F	3/8"	1/4"	3/8"	5/8"	1/4"	006	10
4466	3/8"	1/4"	3/8"	5/8"	1/4"	006	25
4468F	1/2"	3/8"	1/2"	5/8"	1/4"	008	10
4468	1/2"	3/8"	1/2"	5/8"	1/4"	008	25
4470F	5/8"	1/2"	5/8"	5/8"	1/4"	010	10
4470	5/8"	1/2"	5/8"	5/8"	1/4"	010	25
4472F	3/4"	5/8"	3/4"	5/8"	1/4"	012	10
4472	3/4"	5/8"	3/4"	5/8"	1/4"	012	25
4474F	7/8"	3/4"	7/8"	5/8"	1/4"	014	10
4474	7/8"	3/4"	7/8"	5/8"	1/4"	014	25
4476F	1"	7/8"	1"	5/8"	1/4"	016	10
4476	1"	7/8"	1"	5/8"	1/4"	016	25
4478F	1-1/4"	1-1/8"	1-1/4"	5/8"	1/4"	020	10
4478	1-1/4"	1-1/8"	1-1/4"	5/8"	1/4"	020	25
4484F	1-1/2"	1-3/8"	1-1/2"	5/8"	1/4"	024	10
4484	1-1/2"	1-3/8"	1-1/2"	5/8"	1/4"	024	25

### Santoprene Insulated Clamps - Assortments

Part #	Ordering Size (Open I.D.)	Mounting Hole	Pcs
4490F	1/4", 3/8", 1/2", 5/8", 3/4"	1/4"	10
4495F	7/8", 1", 1-1/4", 1-1/2"	1/4"	10



**Insulated**



**Natural**



**Black**

*Individual clamps listed on page 125*

**4490F - Assorted Santoprene Insulated Clamps | 10 Pcs.**

• 1/4" Mounting Hole.

Part#	Description	Pcs
4464.	1/4" I.D. Santoprene Insulated Clamps	2
4466.	3/8" I.D. Santoprene Insulated Clamps	2
4468.	1/2" I.D. Santoprene Insulated Clamps	2
4470.	5/8" I.D. Santoprene Insulated Clamps	2
4472.	3/4" I.D. Santoprene Insulated Clamps	2

**4495F - Assorted Santoprene Insulated Clamps | 10 Pcs.**

• 1/4" Mounting Hole.

Part#	Description	Pcs
4474.	7/8" I.D. Santoprene Insulated Clamps	3
4476.	1" I.D. Santoprene Insulated Clamps	3
4478.	1-1/4" I.D. Santoprene Insulated Clamps	2
4484.	1-1/2" I.D. Santoprene Insulated Clamps	2

**4650H - Assorted Natural Nylon Clamps | 18 Pcs.**

• 13/64" Mounting Hole.

Part#	Description	Pcs
4600	1/8" I.D. Natural Nylon Clamps	7
4601	3/16" I.D. Natural Nylon Clamps	6
4602	1/4" I.D. Natural Nylon Clamps	5

**4651H - Assorted Natural Nylon Clamps | 15 Pcs.**

• 13/64" Mounting Hole.

Part#	Description	Pcs
4603	5/16" I.D. Natural Nylon Clamps	6
4604	3/8" I.D. Natural Nylon Clamps	5
4606	1/2" I.D. Natural Nylon Clamps	4

**4652H - Assorted Natural Nylon Clamps | 10 Pcs.**

• 13/64" Mounting Hole.

Part#	Description	Pcs
4606	1/2" I.D. Natural Nylon Clamps	4
4607	9/16" I.D. Natural Nylon Clamps	3
4608	5/8" I.D. Natural Nylon Clamps	3

**4653H - Assorted Natural Nylon Clamps | 10 Pcs.**

• 13/64" Mounting Hole.

Part#	Description	Pcs
4610	3/4" I.D. Natural Nylon Clamps	5
4612	1" or 1-1/8" (Adj.) I.D. Natural Nylon Clamps	5

**4654H - Assorted Natural Nylon Clamps | 16 Pcs.**

• 13/64" Mounting Hole.

Part#	Description	Pcs
4600	1/8" I.D. Natural Nylon Clamps	2
4601	3/16" I.D. Natural Nylon Clamps	2
4602	1/4" I.D. Natural Nylon Clamps	3
4603	5/16" I.D. Natural Nylon Clamps	2
4604	3/8" I.D. Natural Nylon Clamps	1
4606	1/2" I.D. Natural Nylon Clamps	1
4607	9/16" I.D. Natural Nylon Clamps	1
4608	5/8" I.D. Natural Nylon Clamps	1
4610	3/4" I.D. Natural Nylon Clamps	1
4611	7/8" I.D. Natural Nylon Clamps	1
4612	1" or 1-1/8" (Adj.) I.D. Natural Nylon Clamps	1

**4650H-0 - Assorted Black Nylon Clamps | 18 Pcs.**

• 13/64" Mounting Hole.

Part#	Description	Pcs
4600-0	1/8" I.D. Black Nylon Clamps	7
4601-0	3/16" I.D. Black Nylon Clamps	6
4602-0	1/4" I.D. Black Nylon Clamps	5

**4651H-0 - Assorted Black Nylon Clamps | 15 Pcs.**

• 13/64" Mounting Hole.

Part#	Description	Pcs
4603-0	5/16" I.D. Black Nylon Clamps	6
4604-0	3/8" I.D. Black Nylon Clamps	5
4606-0	1/2" I.D. Black Nylon Clamps	4

**4652H-0 - Assorted Black Nylon Clamps | 10 Pcs.**

• 13/64" Mounting Hole.

Part#	Description	Pcs
4606-0	1/2" I.D. Black Nylon Clamps	4
4607-0	9/16" I.D. Black Nylon Clamps	3
4608-0	5/8" I.D. Black Nylon Clamps	3

**4653H-0 - Assorted Black Nylon Clamps | 10 Pcs.**

• 13/64" Mounting Hole.

Part#	Description	Pcs
4610-0	3/4" I.D. Black Nylon Clamps	5
4612-0	1" or 1-1/8" (Adj.) I.D. Black Nylon Clamps	5

**4654H-0 - Assorted Black Nylon Clamps | 16 Pcs.**

• 13/64" Mounting Hole.

Part#	Description	Pcs
4600-0	1/8" I.D. Black Nylon Clamps	2
4601-0	3/16" I.D. Black Nylon Clamps	2
4602-0	1/4" I.D. Black Nylon Clamps	3
4603-0	5/16" I.D. Black Nylon Clamps	2
4604-0	3/8" I.D. Black Nylon Clamps	1
4606-0	1/2" I.D. Black Nylon Clamps	1
4607-0	9/16" I.D. Black Nylon Clamps	1
4608-0	5/8" I.D. Black Nylon Clamps	1
4610-0	3/4" I.D. Black Nylon Clamps	1
4611-0	7/8" I.D. Black Nylon Clamps	1
4612-0	1" or 1-1/8" (Adj.) I.D. Black Nylon Clamps	1

# Cable Ties & Accessories

## Clamps - Nylon



JT&T's Nylon Cable Clamps are made of industry standard 6/6 nylon (offered in natural & black), they are injection molded to give you consistent performance and exact fit. Designed to secure the routing of cables, harnesses & hoses. Radius edges protect against insulation abrasion & cutting hoses. Quick alignment is achieved with bottom mounting hole. Nylon clamps all have a 13/64" mounting hole. They are tough, lightweight & resistant to aging & most chemicals. UL listed & meets flammability rating UL94V-2. Meets stringent CSA & ISO 9002 international standards & also meets requirements of SAE-AMS-DTL-23190 & SAE-AS33671 (formerly MIL-S-23190 & MS3367). The 4612H & 4612H-0 are adjustable cable clamps & have one mounting hole for a 1" application & another mounting hole for a 1-1/8" application. Temperature rating from -40°C (-40°F) to 85°C (185°F).

Part #	Ordering Size (Open I.D.)	Inner Diameter (+/- 0.03")		Width	Color	Mounting Hole	Pcs
		Closed	Open				
4600H	1/8"	0.12"	1/8"	3/8"	Natural	13/64"	30
4600C	1/8"	0.12"	1/8"	3/8"	Natural	13/64"	100
4600H-0	1/8"	0.12"	1/8"	3/8"	Black	13/64"	30
294600-2-0	1/8"	0.12"	1/8"	3/8"	Black	13/64"	100
4601H	3/16"	0.18"	3/16"	3/8"	Natural	13/64"	29
4601C	3/16"	0.18"	3/16"	3/8"	Natural	13/64"	100
4601H-0	3/16"	0.18"	3/16"	3/8"	Black	13/64"	29
294601-2-0	3/16"	0.18"	3/16"	3/8"	Black	13/64"	100
4602H	1/4"	0.24"	1/4"	3/8"	Natural	13/64"	25
4602C	1/4"	0.24"	1/4"	3/8"	Natural	13/64"	100
4602H-0	1/4"	0.24"	1/4"	3/8"	Black	13/64"	25
294602-2-0	1/4"	0.24"	1/4"	3/8"	Black	13/64"	100
4603H	5/16"	0.30"	5/16"	3/8"	Natural	13/64"	25
4603C	5/16"	0.30"	5/16"	3/8"	Natural	13/64"	100
4603H-0	5/16"	0.30"	5/16"	3/8"	Black	13/64"	25
294603-2-0	5/16"	0.30"	5/16"	3/8"	Black	13/64"	100
4604H	3/8"	0.35"	3/8"	3/8"	Natural	13/64"	22
4604C	3/8"	0.35"	3/8"	3/8"	Natural	13/64"	100
4604H-0	3/8"	0.35"	3/8"	3/8"	Black	13/64"	22
294604-2-0	3/8"	0.35"	3/8"	3/8"	Black	13/64"	100
4606H	1/2"	0.44"	1/2"	1/2"	Natural	13/64"	15
4606C	1/2"	0.44"	1/2"	1/2"	Natural	13/64"	100
4606H-0	1/2"	0.44"	1/2"	1/2"	Black	13/64"	15
294606-2-0	1/2"	0.44"	1/2"	1/2"	Black	13/64"	100
4607H	9/16"	0.48"	9/16"	1/2"	Natural	13/64"	14
4607C	9/16"	0.48"	9/16"	1/2"	Natural	13/64"	100
4607H-0	9/16"	0.48"	9/16"	1/2"	Black	13/64"	14
294607-2-0	9/16"	0.48"	9/16"	1/2"	Black	13/64"	100
4608H	5/8"	0.60"	5/8"	1/2"	Natural	13/64"	10
4608C	5/8"	0.60"	5/8"	1/2"	Natural	13/64"	100
4608H-0	5/8"	0.60"	5/8"	1/2"	Black	13/64"	10
294608-2-0	5/8"	0.60"	5/8"	1/2"	Black	13/64"	100
4610H	3/4"	0.65"	3/4"	1/2"	Natural	13/64"	8
4610C	3/4"	0.65"	3/4"	1/2"	Natural	13/64"	100
4610H-0	3/4"	0.65"	3/4"	1/2"	Black	13/64"	8
294610-2-0	3/4"	0.65"	3/4"	1/2"	Black	13/64"	100
4611H	7/8"	0.75"	7/8"	1/2"	Natural	13/64"	7
4611C	7/8"	0.75"	7/8"	1/2"	Natural	13/64"	100
4611H-0	7/8"	0.75"	7/8"	1/2"	Black	13/64"	7
294611-2-0	7/8"	0.75"	7/8"	1/2"	Black	13/64"	100
4612H	1" or 1-1/8"	0.90" or 0.96"	1" or 1-1/8"	1/2"	Natural	13/64"	6
4612C	1" or 1-1/8"	0.90" or 0.96"	1" or 1-1/8"	1/2"	Natural	13/64"	100
4612H-0	1" or 1-1/8"	0.90" or 0.96"	1" or 1-1/8"	1/2"	Black	13/64"	6
294612-2-0	1" or 1-1/8"	0.90" or 0.96"	1" or 1-1/8"	1/2"	Black	13/64"	100

**Nylon Clamp Assortments - Natural**

Part #	Ordering Size (Open I.D.)	Mounting Hole	Pcs
4650H	1/8", 3/16", 1/4"	13/64"	18
4651H	5/16", 3/8", 1/2"	13/64"	15
4652H	1/2", 9/16", 5/8"	13/64"	10
4653H	3/4" & 1" or 1-1/8"	13/64"	10
4654H	1/8", 3/16", 1/4", 5/16", 3/8", 1/2" 9/16", 5/8", 3/4", 7/8", 1" or 1-1/8"	13/64"	16

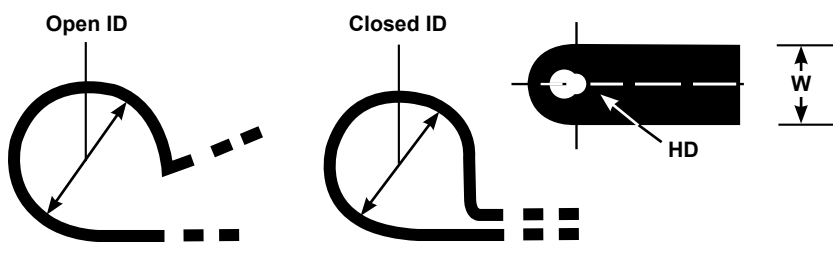


**Nylon Clamp Assortments - Black**

Part #	Ordering Size (Open I.D.)	Mounting Hole	Pcs
4650H-0	1/8", 3/16", 1/4"	13/64"	18
4651H-0	5/16", 3/8", 1/2"	13/64"	15
4652H-0	1/2", 9/16", 5/8"	13/64"	10
4653H-0	3/4" & 1" or 1-1/8"	13/64"	10
4654H-0	1/8", 3/16", 1/4", 5/16", 3/8", 1/2" 9/16", 5/8", 3/4", 7/8", 1" or 1-1/8"	13/64"	16



**Clamp Dimensions**



**Legend**  
**Closed ID:** Closed Inner Diameter  
**Open ID:** Open Inner Diameter  
**HD:** Mounting Hole Diameter  
**W:** Width

**Twist Locks - Natural Nylon**

JT&T's Twist Locks are made of industry standard 6/6 nylon, they are injection molded to give you consistent performance and exact fit. Can be used to twist & lock to secure wire bundles. Easy to use & re-use. They are tough, lightweight & resistant to aging & most chemicals. UL listed & meets flammability rating UL94V-2. Meets stringent CSA & ISO 9002 international standards & also meets requirements of SAE-AMS-DTL-23190 (formerly MIL-S-23190). Temperature rating from -40°C (-40°F) to 85°C (185°F).

Part #	Ordering Size I.D.	Length	Color	Bundle Diameter	Pcs
264762-5	3/16"	1.00"	Natural	0.18" to 0.28"	25
264762-2	3/16"	1.00"	Natural	0.18" to 0.28"	100
264762-4	3/16"	1.00"	Natural	0.18" to 0.28"	1,000
264763-5	5/8"	1.52"	Natural	0.60" to 0.70"	25
264763-2	5/8"	1.52"	Natural	0.60" to 0.70"	100
264763-4	5/8"	1.52"	Natural	0.60" to 0.70"	1,000





# Cable Ties & Accessories



## 4-Way Cable Tie Mounts - Nylon

- Adhesive-Backed &/or Screw Mount

JT&T's Cable Tie Mounts have an adhesive backing - simply peel off backing paper and apply. Clean contact area thoroughly before applying the mounting base for maximum performance. Bases can be attached to a clean and dry surface of metal, plastic, glass, paper and painted surfaces. In addition to and/or in place of the adhesive backing a #6 screw (for 1" mounts) & #4 screw (for 0.75" mounts) can be used to secure the mount onto a surface. A screw or rivet is recommended for extra holding strength against outdoor elements. 4-way entry for maximum versatility. Low profile for use where height is limited. The counter-sunk hole insures that the screw or rivet will not interfere with your cable tie. Adhesive cable tie mounts have acrylic adhesive bases & are made of industry standard 6/6 nylon (offered in natural or black), they are injection molded to give you consistent performance and exact fit. 1.00" square mounts can be used on all cable ties up to 14.5" (Length) x .20" (Width) & 75 Lb. (Tensile Strength). 0.75" square mounts can be used on all cable ties up to 8" (Length) x .15" (Width) & 40 Lb. (Tensile Strength). Tough, lightweight & resistant to aging & most chemicals. UL listed & meets flammability rating UL94V-2. Meets stringent CSA & ISO 9002 international standards & also meets requirements of SAE-AMS-DTL-23190 (formerly MIL-S-23190). Temperature rating from -40°C (-40°F) to 85°C (185°F).



Part #	Ordering Size (4-Way O.D.)	Max Tensile Strength	Tie Opening (+/- 0.02")	Height (+/- 0.02")	Base Dimensions (+/- 0.10")		Screw Size	Color	Pcs
					Length	Width			
4734H	0.75"	Up to 40 Lbs.	0.15"	0.21"	0.75"	0.75"	#6	Natural	10
4734L	0.75"	Up to 40 Lbs.	0.15"	0.21"	0.75"	0.75"	#6	Natural	50
4734C	0.75"	Up to 40 Lbs.	0.15"	0.21"	0.75"	0.75"	#6	Natural	100
4734M	0.75"	Up to 40 Lbs.	0.15"	0.21"	0.75"	0.75"	#6	Natural	1,000
4733H	0.75"	Up to 40 Lbs.	0.15"	0.21"	0.75"	0.75"	#6	Black	10
4733L	0.75"	Up to 40 Lbs.	0.15"	0.21"	0.75"	0.75"	#6	Black	50
4733C	0.75"	Up to 40 Lbs.	0.15"	0.21"	0.75"	0.75"	#6	Black	100
4733M	0.75"	Up to 40 Lbs.	0.15"	0.21"	0.75"	0.75"	#6	Black	1,000
4735F	1.00"	Up to 75 Lbs.	0.20"	0.24"	1.00"	1.00"	#8	Natural	10
4735L	1.00"	Up to 75 Lbs.	0.20"	0.24"	1.00"	1.00"	#8	Natural	50
4735C	1.00"	Up to 75 Lbs.	0.20"	0.24"	1.00"	1.00"	#8	Natural	100
4735M	1.00"	Up to 75 Lbs.	0.20"	0.24"	1.00"	1.00"	#8	Natural	1,000
4736F	1.00"	Up to 75 Lbs.	0.20"	0.24"	1.00"	1.00"	#8	Black	10
4736L	1.00"	Up to 75 Lbs.	0.20"	0.24"	1.00"	1.00"	#8	Black	50
4736C	1.00"	Up to 75 Lbs.	0.20"	0.24"	1.00"	1.00"	#8	Black	100
4736M	1.00"	Up to 75 Lbs.	0.20"	0.24"	1.00"	1.00"	#8	Black	1,000

## Funnel-Entry Wire Clamp Mounts - Nylon

- Adhesive-Backed &/or Screw Mount

JT&T's Wire Clamps have an adhesive backing - simply peel off backing paper and apply. Clean contact area thoroughly before applying the mounting base for maximum performance. Bases can be attached to a clean and dry surface of metal, plastic, glass, paper and painted surfaces. In addition to and/or in place of the adhesive backing a #2 screw can be used to secure the mount onto a surface. Funnel-entry for maximum versatility. Wire Clamps are made of industry standard 6/6 nylon, they are injection molded to give you consistent performance and exact fit. Tough, lightweight & resistant to aging & most chemicals. UL listed & meets flammability rating UL94V-2. Meets stringent CSA & ISO 9002 international standards & also meets requirements of SAE-AMS-DTL-23190 (formerly MIL-S-23190). Temperature rating from -40°C (-40°F) to 85°C (185°F).



Part #	Ordering Size (Height)	Base Dimensions (+/- 0.02")		Screw Size	Color	Pcs
		Length	Width			
284768-8	0.35"	0.41"	0.34"	#2	Natural	10
284768-8	0.35"	0.41"	0.34"	#2	Natural	50
284768-2	0.35"	0.41"	0.34"	#2	Natural	100
284768-4	0.35"	0.41"	0.34"	#2	Natural	1,000

## Push-In Wire Tie Mounts - Nylon

- Arrowhead, Winged Shaped

JT&T's Push-In Wire Tie Mounts are made of industry standard 6/6 nylon, they are injection molded to give you consistent performance and exact fit. Push-mount bases install easily into any 1/4" hole. Centering ears & a locking barb design hold them securely in place. Can be used on all cable ties up to 14.5" (Length) x .24" (Width) & 75 Lb. (Tensile Strength). Tough, lightweight & resistant to aging & most chemicals. UL listed & meets flammability rating UL94V-2. Meets stringent CSA & ISO 9002 international standards & also meets requirements of SAE-AMS-DTL-23190 (formerly MIL-S-23190). Temperature rating from -40°C (-40°F) to 85°C (185°F).



Part #	Tie Opening (+/- 0.02")	Base Dimensions (+/- 0.02")		Fits Screw Hole Size	Color	Pcs
		Width	Height			
4742H	1/4"	5/16"	9/16"	1/4"	Natural	5
4742F	1/4"	5/16"	9/16"	1/4"	Natural	25
4742L	1/4"	5/16"	9/16"	1/4"	Natural	50
4742C	1/4"	5/16"	9/16"	1/4"	Natural	100

## Top-Load Wire Snap-In Clips - PVC

- Adhesive-Backed

JT&T's Top-load wire snap-in clips have an adhesive backing - simply peel off backing paper and apply. Clean contact area thoroughly before applying the mounting base for maximum performance. Bases can be attached to a clean and dry surface of metal, plastic, glass, paper and painted surfaces. Funnel entry speeds cable insertion. Vertical cable entry for ease of installation. Top-load cable snap-in clips are made in a gray PVC material. Double coated rubber based foam tape on adhesive back. Extra wide pull tab on adhesive base is easy to remove; reduces mounting time. UL listed & meets flammability rating UL94V-0. Tough, lightweight & resistant to aging & most chemicals. Temperature rating from -40°C (-40°F) to 85°C (185°F).



Part #	Ordering Size	Shape Style	Max. Holding Diameter (D)	Length (L)	Width (W)	Height (H)	Color	Pcs
4673H	1/2"	"U" Clip	0.50"	1.00"	1.00"	0.69"	Gray	5
4673F	1/2"	"U" Clip	0.50"	1.00"	1.00"	0.69"	Gray	25
4673L	1/2"	"U" Clip	0.50"	1.00"	1.00"	0.69"	Gray	50
4673C	1/2"	"U" Clip	0.50"	1.00"	1.00"	0.69"	Gray	100

## Side-Load Wire Clips - PVC

- Adhesive-Backed

JT&T's Side-load wire snap-in clips have an adhesive backing - simply peel off backing paper and apply. Clean contact area thoroughly before applying the mounting base for maximum performance. Bases can be attached to a clean and dry surface of metal, plastic, glass, paper and painted surfaces. Side cable entry for ease of installation. Side-load cable clips are made in a gray PVC material. Double coated rubber based foam tape on adhesive back. Extra wide pull tab on adhesive base is easy to remove; reduces mounting time. UL listed & meets flammability rating UL94V-0. Tough, lightweight & resistant to aging & most chemicals. Temperature rating from -40°C (-40°F) to 85°C (185°F).



Part #	Ordering Size	Shape Style	Max. Holding Diameter (D)	Length (L)	Width (W)	Height (H)	Color	Pcs
4684H	1/5"	Side Clip	0.20"	0.75"	0.75"	0.34"	Gray	5
4684F	1/5"	Side Clip	0.20"	0.75"	0.75"	0.34"	Gray	25
4684L	1/5"	Side Clip	0.20"	0.75"	0.75"	0.34"	Gray	50
4684C	1/5"	Side Clip	0.20"	0.75"	0.75"	0.34"	Gray	100



# Cable Ties & Accessories

## Stainless-Steel Cable Ties



JT&T's Stainless Steel Cable Ties are self-locking & made from Grade #316 Stainless Steel; they have the highest temperature rating of all our cable ties. Flame-retardant, non toxic, have excellent corrosion & chemical resistance.

Provide a strong, durable method of bundling, identifying & fastening. Can be used in virtually all indoor, marine, outdoor & underground (including direct burial) applications, where severe environmental conditions exist. Stainless steel ties are designed for use in critical applications where strength, vibration, radiation, weathering, corrosion & temperature extremes are a factor. The low profile, self-locking ball bearing head mechanism with fully adjustable strap provides secure, quick & easy installation. Fully enclosed head does not allow dirt or grit to interfere with locking mechanism. Smooth rounded edges ensure safe & efficient handling. Temperature rating from -80°C (-112°F) to 538°C (1,000°F).

Ordering Size (Nominal)	Pcs	Width (+/- 0.02")	Tensile Strength	Part#
5"	10	0.17"	100 Lbs.	304703-1F
5"	50	0.17"	100 Lbs.	304703F
5"	100	0.17"	100 Lbs.	304703C
7.5"	10	0.31"	250 Lbs.	304705-1F
7.5"	50	0.31"	250 Lbs.	304705F
7.5"	100	0.31"	250 Lbs.	304705C
14.5"	10	0.31"	250 Lbs.	304709-1F
14.5"	50	0.31"	250 Lbs.	304709F
14.5"	100	0.31"	250 Lbs.	304709C

**Highest Temperature Rating of All Our Cable Ties**

## Releasable Cable Ties - Nylon



JT&T's Releasable Nylon Cable Ties have an extended tab that allows for easy release & re-use of cable tie. Simply secure cable tie then hold down tab to re-open cable tie. Ideal for jobs that require modifications & other on & off again applications of cable tie. Made of industry standard 6/6 nylon; they are injection molded to give you consistent performance & exact fit. Black cable ties are UV rated for longer lasting outdoor use. Ongoing quality control measures assure products can be counted on under demanding conditions. Nylon cable ties have superior tensile strength; achieved from one piece construction. UL listed & meets flammability rating UL94V-2. Meets stringent CSA & ISO 9002 international standards & also meets requirements of SAE-AMS-DTL-23190 (formerly MIL-S-23190). Temperature rating from -40°C (-40°F) to 85°C (185°F).

Ordering Size (Nominal)	Pcs	Width (+/- 0.02")	Tensile Strength	Natural Part#	UV Black Part#
5"	30	0.14"	40 Lbs.	4757F	—
5"	100	0.14"	40 Lbs.	4757C	—
5"	500	0.14"	40 Lbs.	4757D	—
5"	1,000	0.14"	40 Lbs.	4757M	—
5.5"	30	0.28"	50 Lbs.	—	4756F
5.5"	100	0.28"	50 Lbs.	—	4756C
5.5"	500	0.28"	50 Lbs.	—	4756D
5.5"	1,000	0.28"	50 Lbs.	—	4756M
7.5"	25	0.18"	50 Lbs.	4763F	—
7.5"	100	0.18"	50 Lbs.	4763C	—
7.5"	500	0.18"	50 Lbs.	4763D	—
7.5"	1,000	0.18"	50 Lbs.	4763M	—
7.5"	20	0.30"	50 Lbs.	4759F	4758F
7.5"	100	0.30"	50 Lbs.	4759C	4758C
7.5"	500	0.30"	50 Lbs.	4759D	4758D
7.5"	1,000	0.30"	50 Lbs.	4759M	4758M
11.5"	15	0.18"	50 Lbs.	4761F	4760F
11.5"	100	0.18"	50 Lbs.	4761C	4760C
11.5"	500	0.18"	50 Lbs.	4761D	4760D
11.5"	1,000	0.18"	50 Lbs.	4761M	4760M

## Chrome-Plated Cable Ties

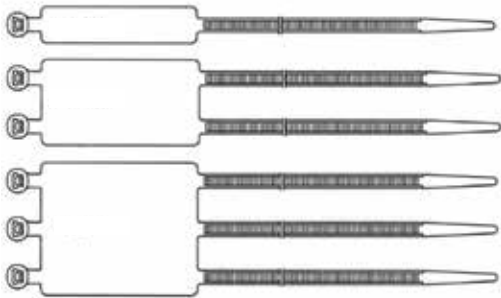
JT&T's Chrome-Plated Nylon Cable Ties are a high quality new contemporary style of cable tie & made with a special chrome plating process that keeps the chrome on & prevents flaking, cracking & pitting – even under stress & in harsh environments. These chrome plated cable ties are ideal for color-coding & cosmetic appeal. They are a popular choice for custom shops, hot rods, custom bikes & many other customized vehicles. Made of industry standard 6/6 nylon; they are injection molded to give you consistent performance & exact fit. Chrome-Plated & UV rated for longer lasting outdoor use. The highly polished finish matches any metallic installation & provides a strong & attractive finish that resists wear, abrasion, UV & most chemical damage. Ongoing quality control measures assure products can be counted on under demanding conditions. They are more resistance to fading, cracking & meets lower insertion force requirements. Angled tail provides quicker initial insertion alignment & tail finger grips allow for easier handling & tightening. Temperature rating from -45°C (-49°F) to 150°C (302°F).



Ordering Size (Nominal)	Pcs	Width (+/- 0.02")	Tensile Strength	Silver Part#	Gold Part#	Blue Part#	Green Part#	Red Part#
8"	10	0.14"	40 Lbs.	4780F	4781F	4782F	4783F	4784F
8"	100	0.14"	40 Lbs.	4780C	4781C	4782C	4783C	4784C
8"	1,000	0.14"	40 Lbs.	4780M	4781M	4782M	4783M	4784M

## I.D. Marker Cable Ties - Nylon

JT&T's I.D. Marker Nylon Cable Ties are used to fasten & identify bundles at the same time. Markers reduce snags while providing support to the bundle. The matte finish surface on both sides of the marker tab; will readily accept ink, pencil, marker, imprinting, stamping & labels. Made of industry standard 6/6 nylon; they are injection molded to give you consistent performance & exact fit. Ongoing quality control measures assure products can be counted on under demanding conditions. They are more resistant to fading, cracking & meet lower insertion force requirements. Angled tail(s) provide quicker initial insertion alignment & tail finger grips allow for easier handling & tightening. Nylon cable ties have superior tensile strength; achieved from one piece construction. UL listed & meets flammability rating UL94V-2. Meets stringent CSA & ISO 9002 international standards & also meets requirements of SAE-AMS-DTL-23190 (formerly MIL-S-23190). Temperature rating from -40°C (-40°F) to 85°C (185°F).

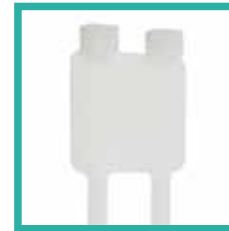


1-Way



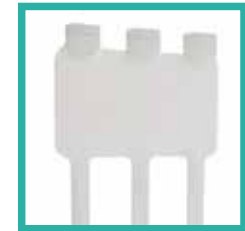
1.00" x 0.32" Tab

2-Way



1.16" x 1.10" Tab

3-Way



1.83" x 1.10" Tab

Ordering Size (Nominal)	Pcs	Tails	Width (+/- 0.02")	Tensile Strength	Tab Size (+/- 0.02")		Natural Part#
					Length	Width	
4"	25	1-Way	0.10"	18 Lbs.	1.00"	0.32"	254701-8
4"	100	1-Way	0.10"	18 Lbs.	1.00"	0.32"	254701-2
4"	1,000	1-Way	0.10"	18 Lbs.	1.00"	0.32"	254701-4
8"	25	1-Way	0.10"	18 Lbs.	1.00"	0.32"	254705-8
8"	100	1-Way	0.10"	18 Lbs.	1.00"	0.32"	254705-2
8"	1,000	1-Way	0.10"	18 Lbs.	1.00"	0.32"	254705-4
7.5"	25	2-Way	0.18"	50 Lbs.	1.16"	1.10"	254742-8
7.5"	100	2-Way	0.18"	50 Lbs.	1.16"	1.10"	254742-2
7.5"	1,000	2-Way	0.18"	50 Lbs.	1.16"	1.10"	254742-4
10.5"	25	3-Way	0.18"	50 Lbs.	1.83"	1.10"	254743-8
10.5"	100	3-Way	0.18"	50 Lbs.	1.83"	1.10"	254743-2
10.5"	1,000	3-Way	0.18"	50 Lbs.	1.83"	1.10"	254743-4

# Cable Ties & Accessories

## Strip-Ties - Hook & Loop Velcro Fastener with Buckle

- JT&T's Hook & Loop Strip-Tie Velcro fasteners with buckle are durable and reuseable.
- The strip-tie is a versatile fastener for cable management

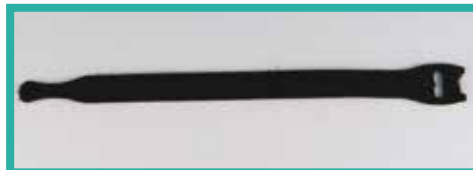
Part #	Pcs	Width	Length	Color
20-6-0	10	3/4"	6"	Black
20-6-2	10	3/4"	6"	Red
20-6-6	10	3/4"	6"	Blue
20-6-9	10	3/4"	6"	White
20-6-13	10	3/4"	6"	Neon Yellow
20-6-296	10	3/4"	6"	(3) Red, (4) White, (3) Blue
20-8-0	8	3/4"	8"	Black
20-8-2	8	3/4"	8"	Red
20-8-6	8	3/4"	8"	Blue
20-8-9	8	3/4"	8"	White
20-8-13	8	3/4"	8"	Neon Yellow
20-8-296	8	3/4"	8"	(3) Red, (3) White, (2) Blue
20-12-0	6	3/4"	12"	Black
20-12-2	6	3/4"	12"	Red
20-12-6	6	3/4"	12"	Blue
20-12-9	6	3/4"	12"	White
20-12-13	6	3/4"	12"	Neon Yellow
20-12-296	6	3/4"	12"	(2) Red, (2) White, (2) Blue



## Strip-Ties - Hook & Loop Velcro Fastener with Slit

- JT&T's Hook & Loop Strip-Tie Velcro fasteners with slit are durable and reuseable.
- The strip-tie is a versatile fastener for cable management

Part #	Pcs	Width	Length	Color
21-8-0	8	1/2"	8"	Black



**Wire Tie Kits  
Available,  
see Pages  
33-34**

## 62-5021F Standard Duty Wire Tie Gun - 1 Pc.

- Cable Tie Tightening Tool.

### Product Features

- For nylon cable ties with 18-50 Lb. tensile strength.
- For cable ties with thickness up to 1.60mm (0.063").
- For cable ties with width from 2.20mm (0.086") to 4.80mm (0.189").

### How to use:

- Select cable tie then loop it around cable bundle & tighten slightly.
- Next insert the cable tie into the gripper slot & gently squeeze the handle until desired tension is reached.



## 62-5022F Medium Duty Wire Tie Gun - 1 Pc.

- Cable Tie Tightening & Automatic Cutting Tool.

### Product Features

- For nylon cable ties with 18-120 Lb. tensile strength.
- For cable ties with thickness up to 1.60mm (0.063").
- For cable ties with width from 2.20mm (0.086") to 7.50mm (0.295").
- Has an incremental tension adjustment dial; which is used to regulate the amount of tension pressure that is applied to the cable bundle.
- Has a tension indicator (above the tension adjustment dial) that shows whether you are increasing or decreasing the tension pressure.
- On the inside of the tool is an automatic cut-off blade; which activates & cuts the cable tie once the required tension has been reached.

### How to use:

- Select cable tie then loop it around cable bundle & tighten slightly.
- Next insert the cable tie into the gripper slot & gently squeeze the handle until maximum tension is reached.
- Once maximum tension is reached the blade will automatically cut-off the end of the cable tie.
- Cuts wire ties off to a smooth nub, leaving no sharp edges.



## 62-5023F Heavy Duty Wire Tie Gun - 1 Pc.

- Cable Tie Tightening & Automatic Cutting Tool.

### Product Features

- For nylon cable ties with 18-175 Lb. tensile strength.
- For cable ties with thickness up to 1.60mm (0.063").
- For cable ties with width from 2.20mm (0.086") to 7.50mm (0.295").
- Has an incremental tension adjustment dial; which is used to regulate the amount of tension pressure that is applied to the cable bundle.
- Has a tension indicator (above the tension adjustment dial) that shows whether you are increasing or decreasing the tension pressure.
- On the inside of the tool is an automatic cut-off blade; which activates & cuts the cable tie once the required tension has been reached.

### How to use:

- Select cable tie then loop it around cable bundle & tighten slightly.
- Next insert the cable tie into the gripper slot & gently squeeze the handle until maximum tension is reached.
- Once maximum tension is reached the blade will automatically cut-off the end of the cable tie.
- Cuts wire ties off to a smooth nub, leaving no sharp edges.

